

# ***VICUT***



## **AUTOMATIC DIGITAL ROLL LABEL CUTTER**

### **VR240X**

(camera, auto adjustable heads, job exchange)



### **PRODUCT PROFILE**

VR240X is updated based on the original desktop digital label die-cutting machine VR240. With CCD camera positioning system, the dual heads of VR240X will move automatically due to different label shapes, to realize job exchange function, which can meet the needs of customers with small batches and many samples. It is the best competitive label cutting solution for in-house applications.

### **APPLICATION & SAMPLES**

#### **| Applicable Industry**

VR240X roll to roll label finisher is mainly used for small volume on-demand label production including blank labels, ink labels, chemical labels, beverage labels, bottled water labels, chili source labels, coffee labels, cosmetic labels, home appliance label, toiletries label, gum label, wine labels and more.

#### **| Applicable Materials**

Stickers, Paper, PP, BOPP, PET, PVC & More!

## MAIN FEATURES



Automatic dual head gap control



Constant pressure control.



Automatic matrix removal



Inline cold lamination



Up to 8pcs slitting knives



Support max. roll width 240mm



Max. die cutting speed 8m/min



Cut max. 330micron thickness



Able to work synchronized online with desktop label printer



CCD camera. Retrieval the codes on the printed media automatically



Job exchange function. Very convenient for different label jobs on one roll media.

## DETAILS DESCRIPTION



### Auto adjustable dual cutting heads

VR240X equipped with a dual cutting head system, the gap between heads is adjusted automatically via control system, not manually, greatly improve the cutting efficiency.



### CCD Camera positioning system

The CCD camera scans the codes which printed on the media so that the cutting heads will move to the correct position according to the different labels shape, to realize the job exchange function.



### Mark points tracking sensor

The sick tracking sensor scans the mark points printed on the material to obtain the cutting dies information with fast speed and feed it back to the machine control system, so as to realize the digital cutting.



### Cold lamination

Automatic lamination before die cutting, makes finishing labels more durable and more widely application.



### Automatic waste removal and tension system

Under the tension of the waste discharge system, the label cutting waste paper will be automatically removed and separated from the winding, so as to obtain a clean label roll for the next process.



### User friendly touch screen panel

Large size touch screen operation panel, professional UI interface design, in line with user habits, operation is more convenient.



### Slitting system

Utilize rotary round blades, automatically cut the label paper into small rolls as needed, up to 8pcs blades can be used. Maximum slitting speed can reach to 60m/min.



### Platform for splicing materials

When you finish cutting a roll of label and prepare to cut another roll, you can use this platform to splice a new roll of material onto the one being processed, so as to realize smooth transition, save paper installation time and improve work efficiency.



### U-disk function

VR240X roll label cutter supports network and U disk for die cutting files transmission.



### Multiple interface

Network interface for transfer cutting file from PC to machine, USB interface for connecting CCD camera. Printer sensor for connecting printing assembling device.



### Power socket

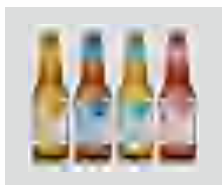
Plug and play, long-lasting and durable.



### Easy-to-use software

Dedicated software support PLT format file, it can choose the knife down point according to shapes, trajectory optimization is for perfect cutting.

## SAMPLE DISPLAY



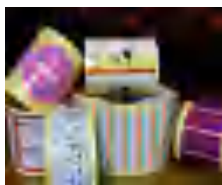
Beer Label



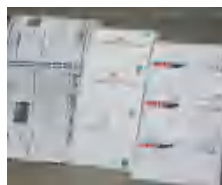
Beverage Labels



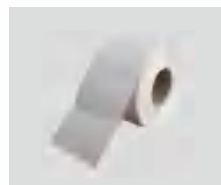
Red Wine Label



Cosmetic Labels



Nameplate



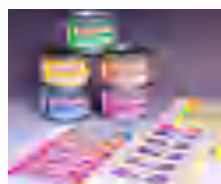
Non-printed labels



Black Tea Label



Chilli Sauce Labels



Chemical Labels

## ACCESSORIES AND TOOLS



### Blade holder

Precision blade holder, built-in bearing design, cooperate with machine blade compensation function, make cutting more smooth. Easy to install the blade and adjust the distance between the blade tips.



### Die Cutting Blades

Special 45 degree die cutting blade, suitable for cutting 0.25 mm thick adhesive label materials such as sticker, coated paper, synthetic paper, PP, PET, etc.



### Slitting blades

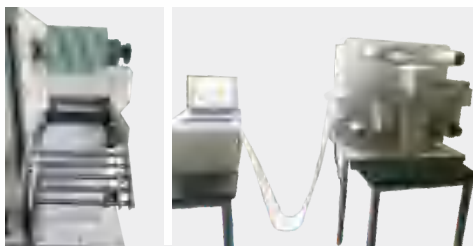
Tungsten steel rotary round blades, stable slitting the paper roll into small rolls for further processing.

## OPTIONAL FUNCTIONS



### Slitting unit

The standard slitting units for VR240X is 4pcs, user can choose the quantity of slitting blades as required, up to 8pcs. The slitting functions can be used alone, as slitting-only-mode.



### Online print components

Through this function, VR240X can be connected with the printer to realize inline work and speed synchronization. It can run with small roll label printers like Memjet VP series or OKI Pro series, ANY-002, EPSON, PRIMERA, UNINET, etc.



### Roll to Sheet Cutter RS350

It is suitable for transverse cutting of various roll materials.

### Suitable materials

Self-adhesive, PP synthetic, aluminum plastic film, PET, PVC, white card, copper plate and other paper and flexible materials.

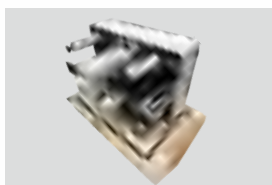
### Technical parameters

- Cutting media width:100-350mm
- Maxi label width:350mm
- Mini label length:10mm
- Maxi label length: 500mm
- Highest paper cutting speed:150/Minute
- Cutting tracking: single mark or double mark
- Cutting accuracy: 0.1mm
- Size (W\*D\*H):670\*460\*915mm
- Weight: 180kg
- Power supply: 220-240VAC 50-60HZ, 500W

## TECHNICAL PARAMETERS

Model	Digital Label Die Cutting Machine VR240X
Cutting Technology	Advanced digital die cutting with blades
Cut mode	Roll to roll fly
Maxi. roll diameter	290mm
Max. die cutting speed	8m/minute(cut 7cmx15cm square)
Die cutting precision	0.1mm(repeat)
Cutting media width	80--240mm
Max. label width	230mm
Max. label length	300mm
Cut track	CCD Camera/Blank
Min.distance from mark to edge	2mm
Min.distance between jobs	2mm
No. of cutting heads	2sets
Laminating Width	225mm
Film roll diameter	230mm
Max.waste roll diameter	300mm
Slitting speed	same with cutting speed
Slitting width	10-230mm
Slitting precision	0.1mm
No. of slitting blades	4sets (up to 8 sets)
No. of rewinder	1 set (3")
Machine dimension	91*63*74cm(L*W*H)
Machine weight(N.W/G.W)	120kg/145kg
Working voltage	AC100-240V, 50-60HZ, 1000WATTS
Data transfer method	USB2.0/Ethernet 10/100Base-T/GPIO
Software	VICUT AI SW
File format	PLT, DXF
Die cutting blades	Tungsten steel blades
Slitting blades	Rotary round blades
Marking sensing method	Single mark or double mark
Other function and device	Auto adjust head distance Auto change cut job Auto set knife drop point Waste removal
Optional	Connect printer device Flat base

## PACKING PHOTOS



## WILLIAM CNC TECHNOLOGY CO., LTD.



**Website**  
www.vicutdigitalcutter.com



**Telephone**  
+86-551-65774134



**Operational Address**  
Room 306 Block B ,Huadi Financial Center Office Building ,  
Shushan District, Hefei, China.

